

# FS-6950DN

► print ► copy ► scan ► fax

A3 MONOCHROME WORKGROUP PRINTER

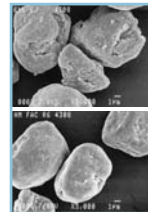
## SPACE TO THINK BIGGER.

For workgroups that require a wide variety of output up to A3, at speed. This flexible new generation printer, with up to 1,000 sheets paper capacity, can accommodate increases in memory, especially helpful for CAD and DTP environments. Low noise, compact design and cost-effective ECOSYS technology give you more space to think about big ideas.

- 32 pages per minute in A4, 16 pages per minute in A3
- 64 MB memory standard, upgradeable to 576 MB
- PDF direct printing from USB Flash Memory devices
- Eco-friendly, ozone-free technology
- Long-life components and easy maintenance
- Duplex unit and network connectivity as standard

**Preliminary  
information.  
Product available  
spring 2006.**

Benefit from a rare combination of talents: high quality A3 output yet small footprint and a remarkably low noise level.



Kyocera shape controlled toner makes the most of every one of the 1,200 dots per inch (above: conventional; below: shape controlled toner).



**ECOSYS**

**KYOCERA**

# FS-6950DN

## A3 MONOCHROME WORKGROUP PRINTER



ECOSYS devices are designed to minimise both direct costs and indirect costs, such as maintenance, administration and consumables. The cartridge-free system requires only the toner to be replaced. The modular design concept allows you to add workflow-enhancing functions and a wide variety of paper handling capabilities as required. Integrated system software provides long-term cross-network compatibility. Kyocera's long-life components cost you and the environment less.

### System platform:

The FS-6950DN offers USB, parallel and network connectivity as standard and delivers problem-free system administration. Kyocera's single platform technology means that the same driver can be used for every Kyocera PCL/PostScript print device on the network; from single-user desktop printers to high-end multifunctional systems. Only Kyocera offers this effortless combination of IT sophistication and high-performance paper handling expertise.

### PRESCRIBE IIe:

With the Kyocera page design and control language PRESCRIBE IIe, even complex graphics, logos and forms (even multipart forms) can be created independently of the system and saved and updated in the printer. Consequently, integration into print files no longer applies. They are only accessed as required and therefore relieve the load on the network.

### KM-NET for Client/KM-NET Viewer:

The settings of all printers on the network can be checked visually and amended from any Windows® PC. KM-NET for Client enables easy setup and monitoring of the printer status via parallel, USB or network connection. KM-NET Viewer is an advanced printer management software tool using the standardized protocol SNMP.

### GENERAL

**Technology:** Kyocera ECOSYS, Laser  
**Engine speed:** Up to 32/16 pages per minute A4/A3 simplex  
Up to 23/10 pages per minute A4/A3 duplex  
**Resolution:** 1,200 dpi  
**Time to first page:** 9 seconds or less  
**Warm-up time:** 15 seconds or less from power on  
**Duty cycle:** Max. 150,000 pages per month,  
max. average 20,000 pages per month  
**Power source:** AC 220 ~ 240 V, 50/60 Hz  
**Power consumption:** Printing: 555 W, Stand-by: 10 W,  
Power-Saving (ECOpower): 4.9 W  
**Noise (ISO 7779):** Printing: 50 dB(A), Stand-by: 40 dB(A),  
Power-Saving (ECOpower): immeasurably low  
**Dimensions (W x D x H):** Main unit: 469 x 395 x 285 mm  
**Weight:** Main unit: Approx. 19.5 kg  
**Certifications:** TÜV/GS, CE, PTS  
This product is manufactured according to ISO 9001 quality standard and ISO 14001 environmental standard.

### PAPER HANDLING

All paper capacities quoted are based on a paper thickness of max. 0.11 mm. Please use paper recommended by Kyocera under normal environmental conditions.

**Input capacity:** 250-sheet universal paper cassette, 60-120 g/m<sup>2</sup>, A3, B4, A4-R, A4, A5, B5, Letter, Letter-R, Legal, Ledger, Custom (139.7 x 148 mm to 297 x 432 mm)  
100-sheet multi-purpose tray, 60-220 g/m<sup>2</sup>, A3, B4, A4-R, A4, A5, A6-R, B5, Letter, Letter-R, Legal, Ledger, Custom (70 x 148 mm to 297 x 450 mm)  
Max. input capacity with 4 optional paper feeders PF-430: 1,350 sheets  
Duplex as standard supports A3-A5-R, 60-120 g/m<sup>2</sup>  
**Output capacity:** 250 sheets face-down with paper full sensor and optional 250 sheets face-up with PT-430

### CONTROLLER

**Processor:** PowerPC 750 / 400 MHz  
**Memory:** Standard 64 MB + ECOMemory, max. 576 MB  
**Emulations:** PCL6/PCL5e incl. PJI, KPDL 3 (PostScript 3 compatible), PDF direct print, Line Printer, IBM Proprinter X24E, Epson LQ-850, Diablo 630, KCGL (HP 7550A)  
**Controller language:** PRESCRIBE IIe  
**Fonts:** 80 outline fonts accessible in all emulations, 1 bitmap font, 45 types of one-dimensional barcodes plus two-dimensional barcode PDF-417, Downloadable fonts: Kyocera, PCL + TrueType format, Type 1 + 3 format  
**Print features:** Duplex, Accounting, PDF direct printing, eMPS, low noise, no Ozone, USB-Host

### INTERFACES

**Standard interface:** High speed bi-directional parallel (IEEE 1284), USB 2.0 (Hi-Speed), Fast Ethernet 10Base-T/100Base-TX, USB Host Interface dedicated for USB Flash Memory device, KUJO-LV option interface slot  
**Multiple interface connection (MIC):** Allows simultaneous data transfer via up to four interfaces, with each interface having its own virtual printer.

### OPTIONS

**Paper handling**  
**PF-430 Paper feeder (max. 4 units):** 250 sheets, 60-120 g/m<sup>2</sup>, A3, B4, A4-R, A4, A5, B5, Letter, Letter-R, Legal, Ledger, Custom (139.7 x 148 mm to 297 x 432 mm)  
**PT-430 Paper tray:** 250 sheets face-up output tray

### Memory

**Printer memory:** 1 DDR SDRAM DIMM slot (64, 128, 256 or 512 MB)  
**Storage memory:** 1 slot for either CompactFlash® memory card type 1 (up to 2 GB) for forms, fonts, logos, macro storage or Microdrive™ (up to 4 GB) for forms, fonts, logos, macro storage as well as document management with eMPS functions such as quick copy, proof and hold, private print and job storage.  
1 USB Host Interface (USB 1.1) for USB Flash Memory device supports PDF direct printing

### Optional interface

**IB-21E Network card:** 10Base-T/100Base-TX  
**SB-50 Network card:** 10Base-FL, FibreLink  
**SB-60 Network card:** TokenRing STP/UTP  
**SB-70 Network card:** Wireless LAN - IEEE 802.11b  
**SB-110FX Network card:** 10Base-T/100Base-TX/100Base-FX, FibreOptic  
**SB-140 Network card:** 10Base-2/10Base-T/100Base-TX  
**SB-80 Parallel interface:** 2nd parallel interface - IEEE 1284  
**IB-11 Serial interface:** RS-232C serial interface (max. 115.2 kbps)

### CONSUMABLES

**TK-440 Toner-kit:** Microfine toner for 15,000 pages with 5% coverage (ISO/IEC 19752)

Capacity of starter toner is 7,500 pages with 5% coverage (ISO/IEC 19752)

### WARRANTY

2-year warranty as standard. Kyocera guarantees the drum and developer for 3 years or 300,000 pages (whichever occurs sooner), provided each printer is used and cleaned in accordance with the service instructions.

**KYO LIFE** Up to 5-year on-site warranty extensions available for printer and options.



Your Kyocera Business Partner:

Kyocera Mita Europe B.V., Hoeksteen 40, 2132 MS Hoofddorp, The Netherlands, Tel +31 (0) 20 65 40 000, Fax +31 (0) 20 65 31 256, www.kyoceramita-europe.com, info@kyoceramita-europe.com  
Kyocera Mita Corporation, 2-28, 1-Chome, Tamatsukuri, Chuo-Ku, Osaka 540-8585, Japan, www.kyoceramita.com

Kyocera does not warrant that any specifications mentioned will be error-free. Specifications are subject to change without notice. Information is correct at time of going to press. All other brand and product names may be registered trademarks or trademarks of their respective holders and are hereby acknowledged.

